

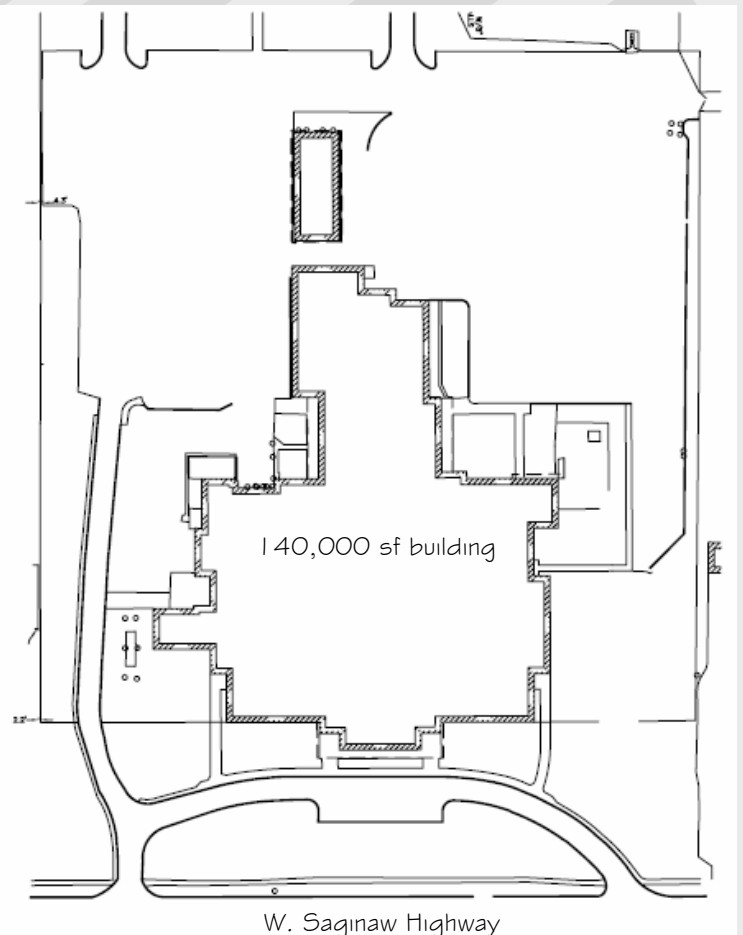
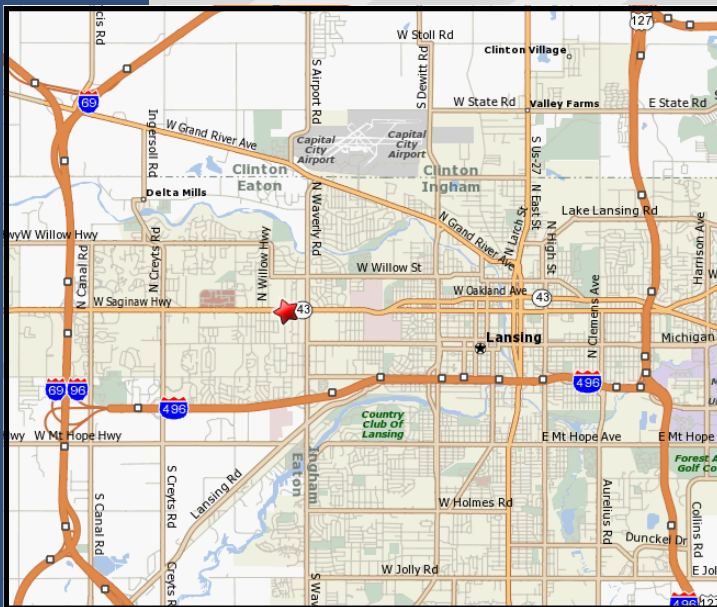
Commercial Lease Space Available

4300 W. Saginaw

Lansing, Michigan



- Located on W. Saginaw Highway, just west of Waverly Road
- Close to I-496 and I-69/I-96
- Large, open suites - several suites have raised flooring already installed
- 2003 traffic count at Saginaw Hwy. and Waverly Road is 34,800



EYDE COMPANY
4660 S. HAGADORN RD.
STE. 660
EAST LANSING, MI 48823
(517) 351-2480
1-800-442-3933